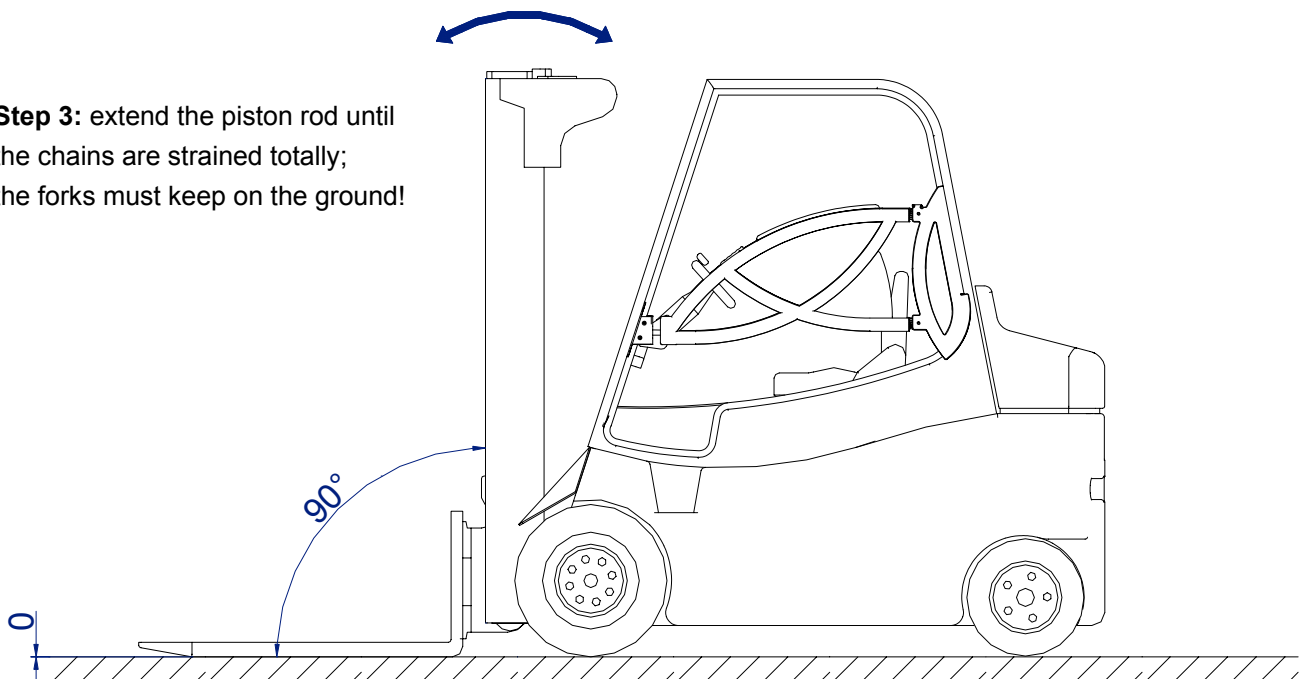


**Step 1:** move lift mast into in upright position!

**Step 2:** lower the forks down to the ground!

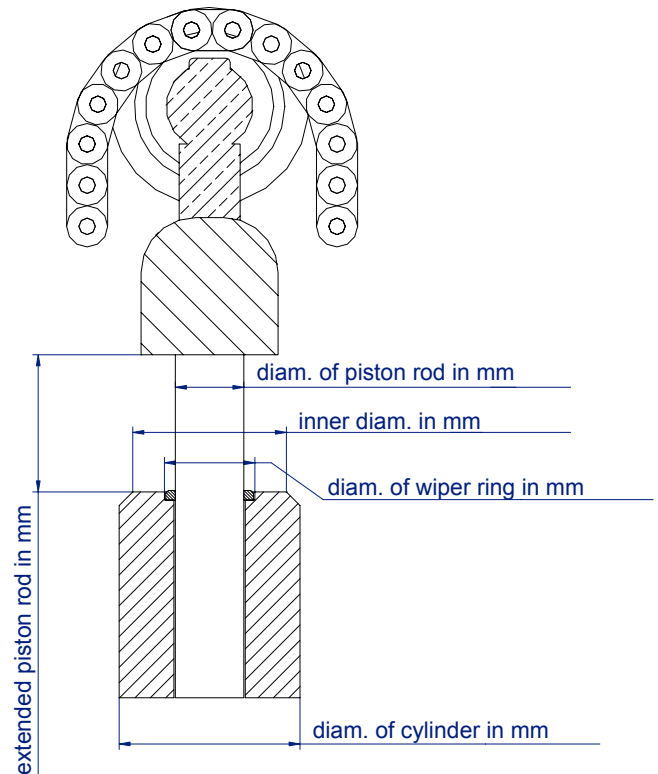
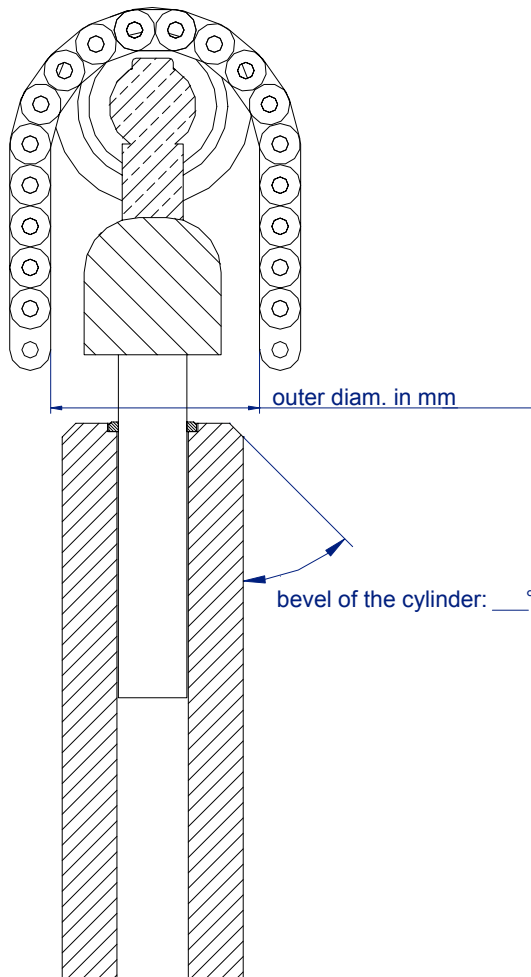
**Step 3:** extend the piston rod until the chains are strained totally; the forks must keep on the ground!



**Step 4:** record truck data!

Manufacturer and type:				
Serial number / Year of construction:				
Type of lift mast (mark with a cross):	standard	<input type="checkbox"/>	two-stage	<input type="checkbox"/>
Identification of the lift mast (e.g. No.):				
Comments:				

**Step 5:** record measures of the lift mast!



Outer diameter:	mm
Bevel of the cylinder (if existing):	°
Diameter of piston rod:	mm
Inner diameter:	mm
Diameter of wiper ring:	mm
Diameter of cylinder:	mm
Length of extended piston rod:	mm

**send fax to: +49-(0)2842-908919**